

Hurlstone Agricultural High School will proudly remain an academically selective, agriculturally focused, boarding school.



Concept design view looking south-west over new farm hub, across Roy Watts Rd, to the new boarding dormitory buildings

Hurlstone Agricultural High School

Information pack | December 2023

As part of the NSW Government's plan to rebuild essential services, the 2023-24 Budget is delivering a record \$8.8 billion for new and upgraded schools. This targeted investment in growing communities will ensure working families get access to a world class public education.

The NSW Government is investing more than \$60 million in the future of Hurlstone Agricultural High School to continue its reputation for educational excellence. The project will deliver:



New boarding facilities with 180 student accommodation beds and two staff residences



New farm hub with modern technology, new equipment and new learning spaces

In 2019, a major redevelopment of the school was also completed to upgrade the Science, Technology, Engineering, Arts and Mathematics (STEAM) facilities.

Highlights of school upgrade

New boarding facilities

The boarding upgrade will include:

- two new dormitory buildings
- 180 bed student accommodation
- new dormitory monitor rooms
- new senior and junior common rooms
- new bathrooms and facilities
- new overnight accommodation for staff
- new permanent staff residences.

New farm hub

The new farm hub will include:

- new dairy shed and milking parlour
- new co-located learning space
- new calf, beef, pig and chicken sheds
- new commodity and storage sheds
- new equipment
- new irrigation systems
- relocation of sheep shed
- expanded hydroponic facilities.

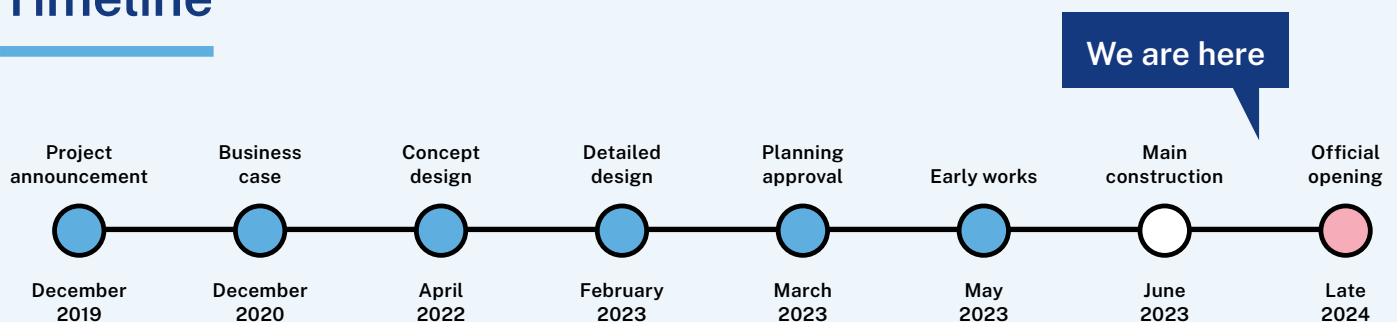


New chicken shed featuring modern technology:

- Automatic doors
- Automatic lighting
- Automatic water feeder
- Solar panels
- Wind sensor
- Egg conveyor belt
- Roosting and egg laying areas
- Mobile deployment.

New chicken shed in use November '23

Timeline



Progress update

The main phase of construction commenced for the new farm hub and new boarding facilities in mid-2023.

Construction works are progressing on track with the project delivery timetable. The project is scheduled for completion in late 2024.

Works completed and underway

New boarding facilities:

- **Weatherproofing** – external surface of new buildings will be closed off to the elements in December '23
- **Building framework** – concrete and steel structures of floors, walls, roofs in place, and service infrastructure have been installed.

New farm hub:

- **Farm buildings** – construction of structures for cattle barn, machinery shed, commodity shed are underway and will be completed in December '23.
- **Temporary facilities** – chicken sheds, multi-purpose learning space and farm office established for use during construction.

School building layout



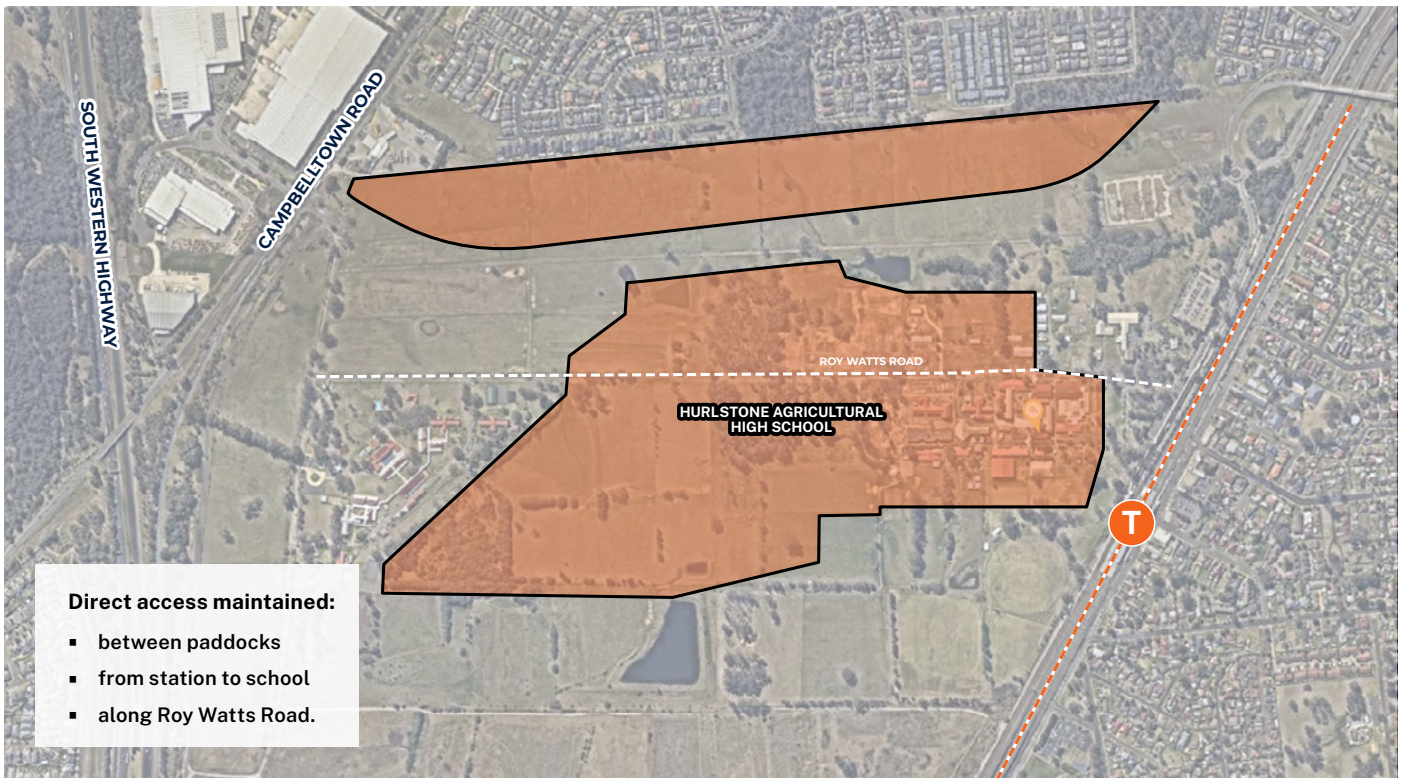
School building layout after project completion

Agriculture is our school DNA

This project forms part of the NSW Government's model for agricultural education. The school upgrade will ensure students across the state continue to have access to high-quality agricultural education.

Consultation with key school stakeholders, industry and agricultural experts was completed throughout the planning and design process to ensure the amount of agricultural land supports the present and future school curriculum.

The modern technology, contemporary facilities and enhanced farm layout delivered in this upgrade will equip students with the knowledge to be the next generation of leaders and ensure the school continues its long-standing reputation in agricultural excellence.



Map of Hurlstone Agricultural High School land after project completion

Farm hub design upgrade

Minor edits to the design of the new farm hub are being made to enhance student learning outcomes through richer, more desirable experiences.

These changes include:

- **Milking technology** – switch to semi-automated milking technology.
- **Hydroponics** – expansion of hydroponics capacity and removal of aquaculture.
- **Internal layouts** – adjustment to the internal layouts of some buildings.

Beyond improved learning outcomes, these minor changes will allow easier and more flexible management of farm operations, benefiting school operations.

These changes follow months of in-depth, up-close consultation with key school stakeholders. Each modification has received the school's tick of approval.

In December 2023, a request will be submitted to Campbelltown City Council to adjust the existing Development Approval. This process will not delay project timelines.

New sports facility

Students will benefit from a new sports oval and PDHPE storage facility as part of the school upgrade underway.

During 2024, the school will retain access to its existing oval and storage facility without change.

Beginning in 2025, the sports facility will move to a new location. A number of options are presently being developed and considered for the new location.

The department is working closely with key school stakeholders to ensure the new facility meets the needs of students.

A transition plan is in place to manage this change and ensure that school operations and student learning are not disrupted.

Further information will be provided to the school community during 2024, as planning advances and details are confirmed.



Some preliminary locations being considered for new sports ovals

Looking forward – what to expect in 2024

As the project enters its final year and the finish line approaches, here's what you can expect in 2024:



Construction

Main works construction will continue uninterrupted from now until project completion.



Consultation

We'll continue to work closely with the school and local communities to prevent potential disruptions and ensure smooth project delivery.



Communication

We'll continue to keep the school and local communities informed, providing you with all the information you need at each step of the process.



Commissioning

Commissioning meetings between the school, project team and stakeholders from across the department to prepare for use of the new facilities will begin December 2024.



Minor design upgrade

Approval from Campbelltown Council to make minor edits to some farm building layouts is expected in early 2024.



Sports oval relocation

Planning and consultation will continue for the relocation of sports oval, ready for student use in 2025.



Information session

An information session dedicated to preparing the school community for use of the new facilities will be delivered mid-2024.



Opening

An official opening ceremony – including smoking ceremony – to celebrate project completion and welcome the community will take place in late 2024.

Frequently asked questions

Construction

Will the construction work hours change in 2024?

All construction work will continue within the approved hours of 7 am to 6 pm Monday to Friday and 8 am to 5 pm Saturday. No work will occur on Sundays or public holidays unless notified.

Within these hours, the project team will continue to work closely with the school to schedule works at times that prevent disruption to the school and local communities.

Traffic and transport

Will there be any change to transport or access arrangements during 2024?

All existing transport options will remain available to parents and students – there will be no change.

To accommodate changes in neighbouring land uses, the student access gate leading to Glenfield Station may be relocated. Any change would be minor only and not disrupt school access.

Minor design upgrade

What type of planning approvals are required for the minor design upgrade?

An application to modify the existing Development Approval – known as a Section 96 Modification Application – will be lodged with Campbelltown City Council in December 2023. Given the very minor nature of the changes, it is expected that council will approve this application without the need for other approvals or permissions.

Sports facility

When will the location of the new sports oval and PDHPE storage facility be confirmed?

Preliminary options for a new location have been identified. The project team and school are working closely to review these options and complete required planning with the aim for the ovals to be ready Term 1 2025.

Glenfield Education Precinct

What changes will be taking place in the Glenfield Education Precinct in 2024?

Glenfield Education Office will relocate to a new, refurbished location in Liverpool. Glenfield Return from Suspension Centre will also temporarily move to a new, refurbished location within the precinct (ANZAC Cottage).

In early 2024, Landcom will install a fence along the internal boundaries of its land, preventing access by farm animals and members of the public from NSW Department of Education land.

Boarding

When will students be able to use the new boarding facilities?

The present aim is for students to begin using the facilities from Term 4 2024.

But this date has not yet been confirmed and may be revised depending on construction progress and the needs of both the school and students.

Frequently asked questions (cont.)

Enrolment planning

Are there any special actions I need to take to enrol/re-enrol in the school?

You don't need to do anything special. If you are enrolled, the enrolment will carry over as per normal.

If you are yet to enrol, please follow the steps listed on the department's webpage:

<https://education.nsw.gov.au/public-schools/selective-high-schools-and-opportunity-classes>

Opening ceremony

Who will be invited to attend the official opening ceremony?

The opening ceremony will be open to everyone from the school and local community. Further information will be shared as event planning progresses in mid-2024.

Communication

How will the school and local community be kept up to date with project developments?

We'll continue to keep you informed through the existing project and school channels. As works advance, we'll share information through project updates, works notifications, information sessions, newsletters, email and phone.

All major project communications will be shared on SINSW's dedicated project webpage. While the school will also share updates intended for the school community on its own webpage.

Stay informed

For more information, to ask a question or to make a comment, please contact us on the details below or visit the project webpage by searching 'Hurlstone Agricultural High School upgrade' on schoolinfrastructure.nsw.gov.au.

	Website Stay up to date by visiting the School Infrastructure NSW website schoolinfrastructure.nsw.gov.au		For a Translation and Interpreting Service call 131 450 and ask them to call the Department of Education - School Infrastructure NSW on 1300 482 651 .
	Email Contact the Community Engagement team by emailing schoolinfrastructure@det.nsw.edu.au		Muốn có Dịch vụ Thông Phiên dịch , gọi đến số 131 450 và nhờ họ gọi đến Bộ Giáo dục - Cơ sở hạ tầng Trường học NSW qua số 1300 482 651 .
	Phone Contact us between 9 am and 5 pm, Monday to Friday on 1300 482 651		மொழிபெயர்ப்பு மற்றும் உரைபெயர்ப்பு சேவை'க்கு 131 450 -ஐ அழைத்து, 1300 482 651-இல் 'NSW கல்வித் திணைக்களப் பாடசாலை உட்கட்டமைப்புகள்' (Department of Education - School Infrastructure NSW)-ஐ அழைக்குமாறு கேளுங்கள்.